

## Lifestyle - SET-ASTG34KMTC - Reverse Cycle

Ideal for large rooms. With energy management features such as Human Sensor Control, economy mode, and weekly timers, the Lifestyle range makes indoor comfort easy and cost-effective.



ASTG34KMTC



AOTG34KMTC



AR-REW1E

## Key features



### Auto Shut Louvre

The auto shut louvres close or open automatically when the unit stops or starts.



### All DC

With All DC, electricity loss is decreased and power consumption reduced.



### Automatic Louvre

The position of the louvres is set automatically to match the operating mode. It is also possible to adjust the louvres using the remote control.



### Weekly Timer

Different ON-OFF times can be set for up to 7 days.



### Human Sensor

Human sensor detects movement of people within the conditioned room.



### Auto Changeover

The unit automatically switches between operating modes based on the temperature setting and room temperature.



### Auto Restart

Should there be a temporary loss of power, the unit will automatically restart itself in the same operating mode, once the power is restored.



### Automatic Air Flow Adjustment

The micro-processor automatically adjusts the air flow to follow changes in room temperature.

# Key features



## On-Off Timer

ON-OFF timer can be set to operate once every 24 hours.



## Apple-Catechin Filter

Fine dust, invisible mould spores and harmful microorganisms are absorbed onto the filter by static electricity and further growth is inhibited and deactivated by the polyphenol ingredient extracted from apples.



## Blue Fin Heat Exchanger

Corrosion-resistance of the heat exchanger in coastal areas has been improved by blue fin treatment of the outdoor unit heat exchanger.



## Program Timer

This timer allows selection of one of four options. ON, OFF, ON --> OFF, or OFF --> ON.



## Right / Left Swing Louvre

The right/left louvre automatically swings in either direction.



## i-PAM

i-PAM inverter technology enables high output and high efficiency performance.



## Super Quiet Mode

The indoor units fan can operate at a low speed to produce quieter operation.



## Washable Panel

Dust that accumulates on the air conditioner can be easily cleaned with a damp cloth.



## Up/Down Swing Louvre

The up/down louvre automatically swings up and down.



## Double Swing Automatic

Complex swing action of the louvres enables them to swing automatically in both horizontal and vertical directions.



## Demand Response

This product is designed to be compatible with Air Conditioning Demand Response program. When your electricity supplier activates one of the three modes the air conditioner switches over to the appropriate operation.



## Economy Mode

Limits the maximum operation current, and performs operation with the power consumption suppressed.



## Long-Life Ion Deodorisation Filter

The filter deodorises by powerfully decomposing absorbed odours using the oxidising and reducing effects of ion generated by the ultra-fine particle ceramic.



## Powerful Mode

Powerful mode will operate the indoor unit fan and outdoor unit compressor at maximum operation to quickly make the room conditioned and comfortable.



## Sleep Timer

The micro-processor gradually changes the room temperature, allowing you to sleep comfortably at night.



## Auto-Off Timer

Automatically stops the units operation when a fixed time has elapsed from the start of operation.



## 10°C Heat Operation

The room temperature can be set to go no lower than 10°C, thus ensuring that the room does not get too cold when not occupied.



## V-PAM

v-PAM inverter technology increases the maximum output of the compressor significantly and enables high power and high efficiency.



## Low Noise Mode

The compressor speed and the outdoor unit fan speed are limited to reduce the operational noise.



## Filter Sign

Select appropriate intervals for displaying the filter sign on the indoor unit according to the estimated amount of dust in the air of the room.

# Specifications

Model No.	Outdoor Unit		AOTG34KMTC	
	Indoor Unit		ASTG34KMTC	
Operation Type			Reverse Cycle	
Power Source	V / Ph / HZ		230 / 1 / 50	
Capacity	Cooling	KW	9.40 (2.9 - 11.2)	
	Heating	KW	10.30 (2.7 - 11.7)	
Input Power	Cooling	KW	2.78	
	Heating	KW	2.84	
EER	Cooling	kW/kW	3.38	
COP	Heating	kW/kW	3.63	
Star Rating	Cooling		2.5	
	Heating		2	
Noise Level	Indoor Sound Pressure (High / Quiet)	Cooling	dBa	52 / 34
		Heating	dBa	51 / 33
	Outdoor Sound Pressure (Cooling / Heating)		dBa	50 / 54
	Outdoor Sound Power		dBa	65
Electrical				
Power Requirement			230	
MCB / Cable Size (mm)			4	
Interconnecting Wires / Size (mm)			1.5	
Recommended Breaker Size (amps)			20	
Maximum Operating Current (amps)			19.5	
Refrigerant				
Refrigerant Type			R32	
Charge (g)			2,000	
Pre Charged (M)			30	
Maximum Pipe Length (M)			75	
Minimum Pipe Length (M)			5	
Maximum Pipe Height (M)			30	
Additonal Refrigerant Charge (g) Per M			45	
Pipe Sizes Suction / Liquid (mm)			15.88 / 9.52	
Refrigeration Pipes Connection Method			Flared	



# Technical Data - Cooling

NOTE: Values calculated are based on maximum capacity

## ■ Model: ASTG34KMTC

AFR		m <sup>3</sup> /h												1,400								
		Indoor temperature																				
		18			21			23			25			27			29			32		
		12			15			16			18			19			21			23		
Outdoor temperature	°CDB	TC	SHC	IP	TC	SHC	IP	TC	SHC	IP	TC	SHC	IP	TC	SHC	IP	TC	SHC	IP	TC	SHC	IP
		kW			kW			kW			kW			kW			kW			kW		
	-10	7.35	5.92	1.03	8.19	5.95	1.05	8.47	6.47	1.05	9.03	6.49	1.06	9.31	7.01	1.07	9.87	6.98	1.08	10.42	7.44	1.09
	0	7.29	5.89	1.09	8.12	5.92	1.11	8.39	6.44	1.11	8.95	6.46	1.12	9.22	6.98	1.13	9.78	6.95	1.14	10.33	7.40	1.15
	5	7.24	5.93	1.16	8.07	5.97	1.18	8.34	6.49	1.18	8.89	6.51	1.19	9.17	7.03	1.20	9.71	7.00	1.21	10.26	7.46	1.22
	10	7.21	6.01	1.25	8.04	6.04	1.27	8.31	6.57	1.28	8.86	6.59	1.29	9.13	7.12	1.30	9.68	7.09	1.31	10.23	7.55	1.32
	15	7.17	5.99	1.40	7.99	6.03	1.42	8.26	6.55	1.43	8.81	6.58	1.44	9.08	7.10	1.45	9.63	7.07	1.46	10.17	7.53	1.48
	20	7.36	5.73	1.72	8.20	5.76	1.75	8.48	6.27	1.76	9.04	6.29	1.77	9.32	6.79	1.78	9.88	6.76	1.80	10.43	7.20	1.82
	25	7.47	5.84	2.04	8.32	5.88	2.07	8.60	6.39	2.08	9.17	6.41	2.10	9.45	6.92	2.11	10.02	6.90	2.13	10.58	7.35	2.15
	30	7.70	5.96	2.42	8.57	6.00	2.45	8.87	6.52	2.47	9.45	6.54	2.49	9.74	7.07	2.50	10.33	7.04	2.53	10.91	7.50	2.55
35	7.43	5.87	2.68	8.27	5.90	2.72	8.55	6.41	2.74	9.12	6.44	2.77	9.40	6.95	2.78	9.96	6.92	2.81	10.53	7.37	2.84	
40	6.72	5.53	2.77	7.49	5.56	2.81	7.74	6.04	2.82	8.26	6.06	2.85	8.51	6.55	2.87	9.02	6.52	2.90	9.53	6.95	2.92	
46	5.70	5.04	2.80	6.35	5.07	2.84	6.57	5.51	2.85	7.00	5.53	2.88	7.22	5.97	2.90	7.65	5.95	2.93	8.08	6.33	2.95	

# Technical Data - Heating

NOTE: Values calculated are based on maximum capacity

## ■ Model: ASTG34KMTC

AFR		m <sup>3</sup> /h												1,400								
		Indoor temperature																				
				16		18		20		22		24										
Outdoor temperature	°CDB	°CWB	TC	IP	TC	IP	TC	IP	TC	IP	TC	IP										
			kW		kW		kW		kW		kW											
	-15	-16	8.87	3.70	8.66	3.77	8.45	3.85	8.24	3.93	8.03	4.01										
	-10	-11	8.94	3.87	8.73	3.95	8.51	4.03	8.30	4.12	8.09	4.20										
	-5	-7	9.85	4.07	9.61	4.15	9.38	4.24	9.14	4.32	8.91	4.41										
	0	-2	11.55	4.07	11.27	4.15	11.00	4.24	10.72	4.32	10.45	4.41										
	5	3	12.14	4.07	11.85	4.15	11.56	4.24	11.27	4.32	10.98	4.41										
	7	6	12.29	4.07	11.99	4.15	11.70	4.24	11.41	4.32	11.12	4.41										
	10	8	12.66	4.07	12.36	4.15	12.06	4.24	11.76	4.32	11.46	4.41										
	15	10	14.09	4.07	13.76	4.15	13.42	4.24	13.09	4.32	12.75	4.38										
20	15	14.83	4.03	14.48	4.11	14.12	4.20	13.77	4.28	13.42	4.34											
24	18	15.29	3.99	14.93	4.08	14.57	4.16	14.20	4.24	13.84	4.31											

AFR: Airflow Rate (m<sup>3</sup>/min) / High Fan Speed 389 |/s

TC: Total Capacity (kW)

SHC: Sensible Heat Capacity (kW)

IP: Input Power (kW)

# Air Flow Data

## ■ Models: ASTG30KMTC and ASTG34KMTC

### ● Cooling

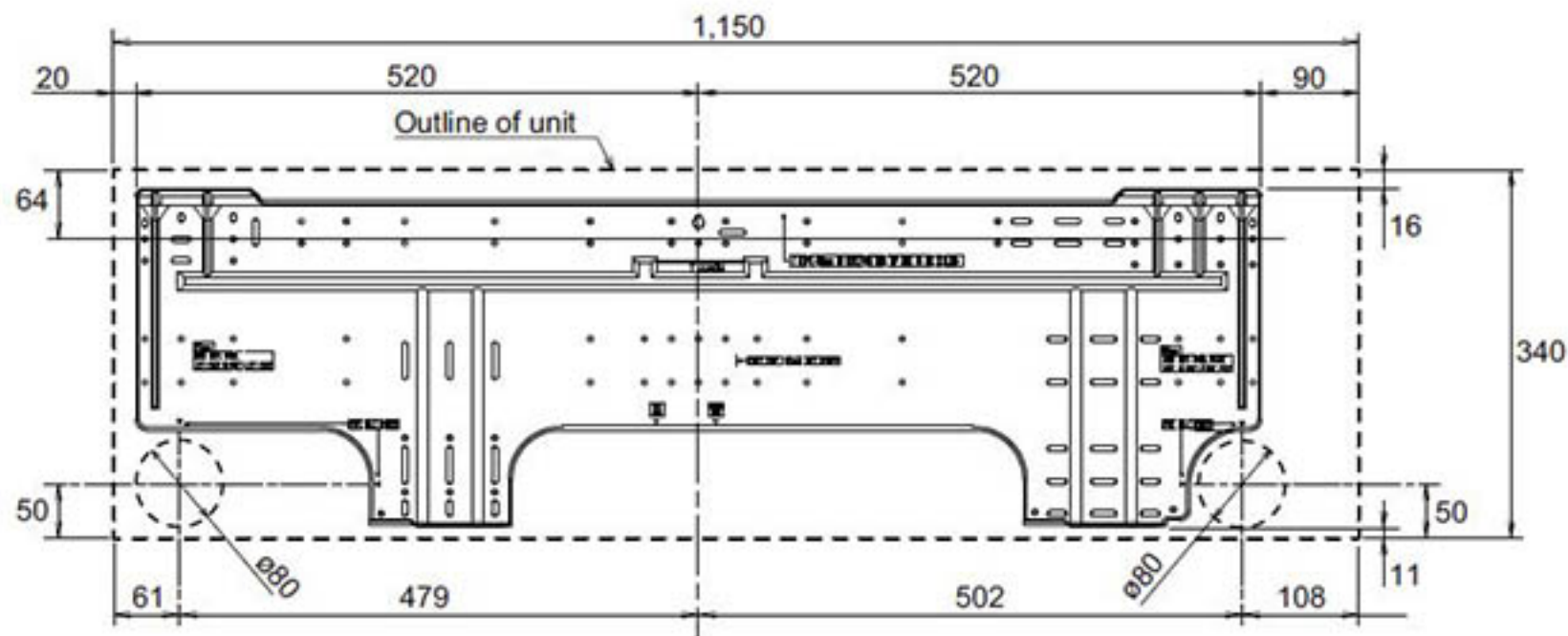
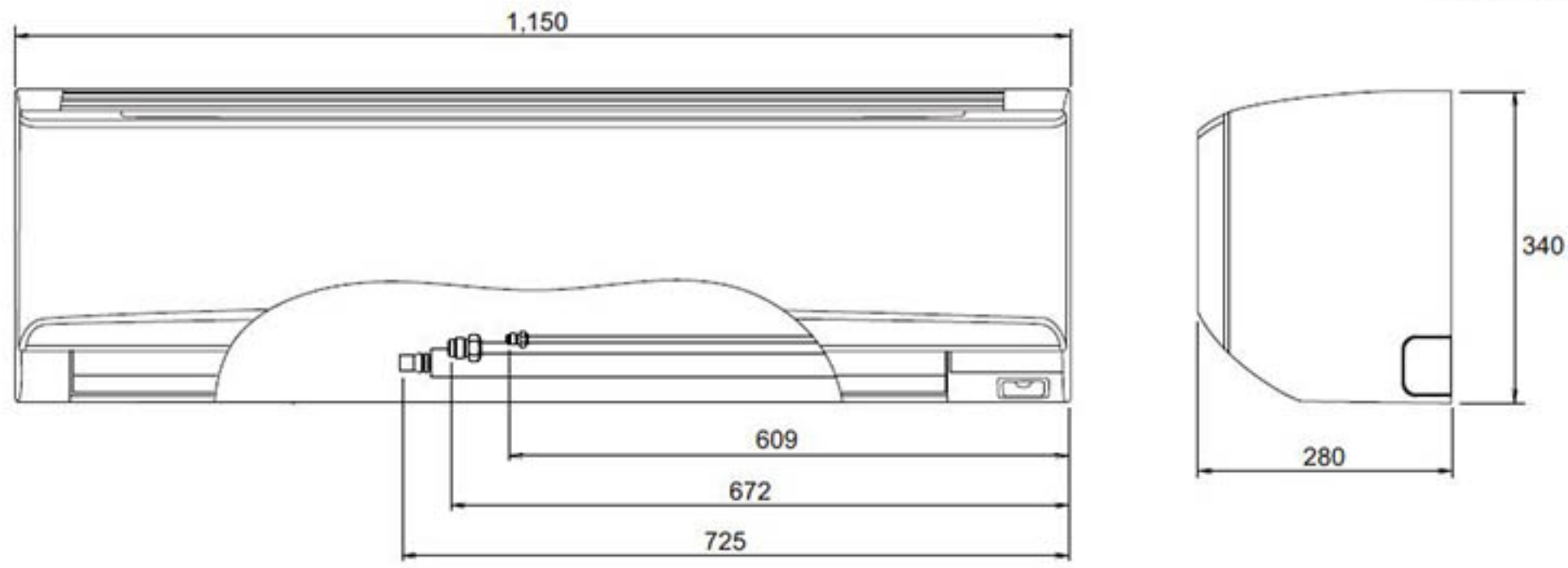
Fan speed	Airflow	
HIGH	m <sup>3</sup> /h	1,400
	l/s	389
	CFM	824
MED	m <sup>3</sup> /h	1,150
	l/s	319
	CFM	677
LOW	m <sup>3</sup> /h	920
	l/s	256
	CFM	542
QUIET	m <sup>3</sup> /h	720
	l/s	200
	CFM	424

### ● Heating

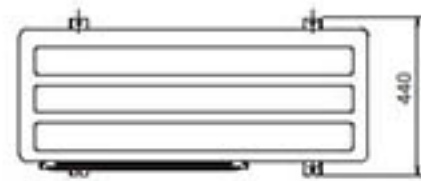
Fan speed	Airflow	
HIGH	m <sup>3</sup> /h	1,400
	l/s	389
	CFM	824
MED	m <sup>3</sup> /h	1,150
	l/s	319
	CFM	677
LOW	m <sup>3</sup> /h	920
	l/s	256
	CFM	542
QUIET	m <sup>3</sup> /h	720
	l/s	200
	CFM	424

# Dimensions

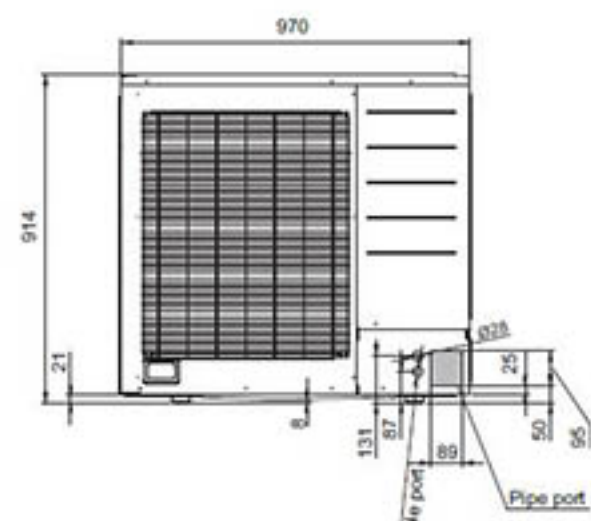
Unit: mm



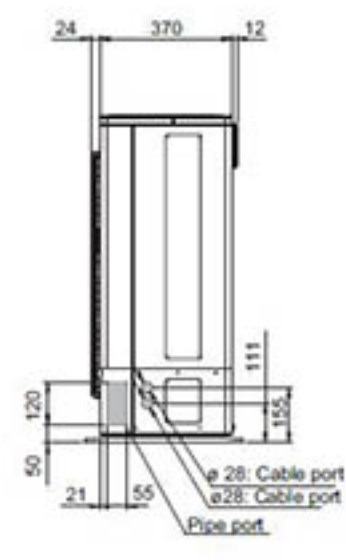
Unit : mm



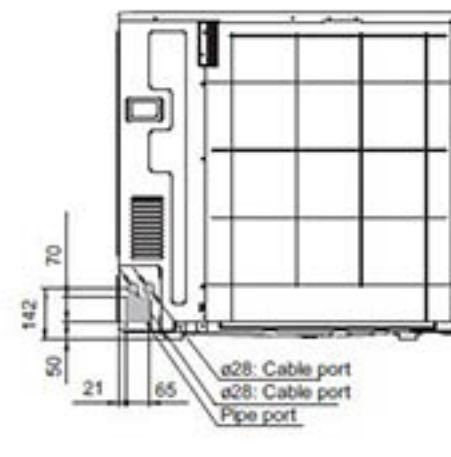
Top view



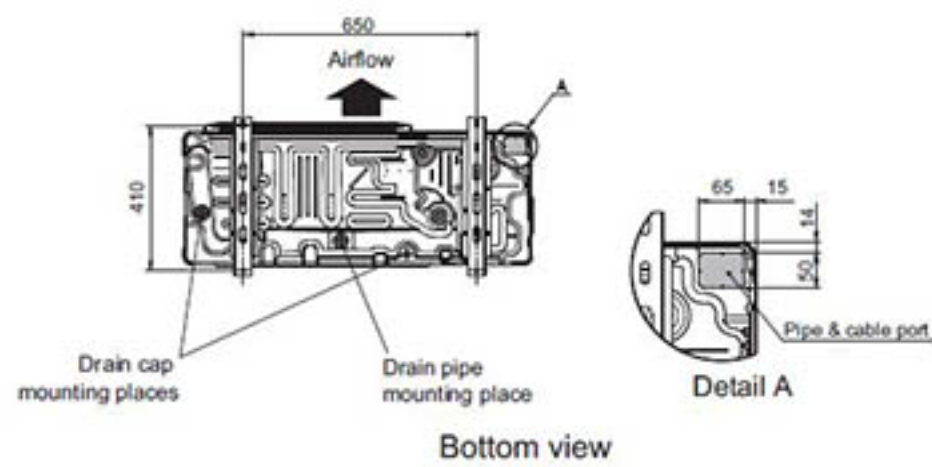
Front view



Side view



Rear view



Bottom view



# Fujitsu General Assist

## Technical Support

Fujitsu General Assist deploys Fujitsu trained technicians in Sydney, Melbourne, Brisbane, Adelaide and Perth and provides access to dedicated Service Agents in all other parts of Australia. These technicians are well equipped with the necessary tools and spare parts to enable them to resolve issues onsite, promptly, offering customers a high first time fix rate and seamless experience.

## Exceptional After Sales Service

At Fujitsu, we pride ourselves on providing exceptional customer service. Fujitsu General Assist is our in-house customer care and technical support department which was implemented to deliver a high level of support and accessibility to our customers.



## Peace of Mind

Fujitsu believe in the quality and reliability of every air conditioner we sell, providing a 3 years warranty for commercial applications and 5 years warranty for domestic applications



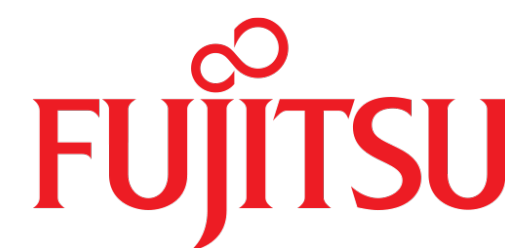
## Optional Parts

Wired Remote Controller:	UTY-RHRY, UTY-RNRYZ3, UTY-RSRY
WiFi Control:	UTY-NXT-BOX
Other Options:	UTY-TWRXZ2, UTY-XCSXZ2, UTY-XWZXZ5

Please refer to specifications before installation and servicing this product. Only persons and/or companies qualified and experienced in the installation, service and repair of refrigerant products should be permitted to do so. The purchaser must ensure that the person and/or company who is to install, service or repair this air conditioner has qualifications and experience in refrigerant products. Suitable access for warranty and service is required. Future improvement, specifications, designs of product and availability are subject to change without notice. All Capacity and Energy Efficiency ratings are based on AS/NZS3823.2. Running current is at rated conditions (AS3823) and does not include compressor start-up or variations in power supply and load conditions.

All wiring specifications are minimum recommendations.  
Please consult AS/NZS 3000 and your local wiring rules for clarification of cable and circuit requirements.  
SOUND POWER LEVELS measured in accordance to AS1217.  
In all conditions, the FAN speed is HIGH.  
Specifications and design are subject to change without notice.  
Please check with the manufacturer.

Note: Specifications are based on the following conditions.  
Cooling: Indoor temperature of 27°CDB / 19°CWB, and outdoor temperature of 35°CDB / 24°CWB.  
Heating: Indoor temperature of 20°CDB / 15°CWB, and outdoor temperature of 7°CDB / 6°CWB.  
Pipe length: 7.5m; Height difference between outdoor unit and indoor unit: 0m. Voltage: 230V.



FUJITSU GENERAL AUSTRALIA

ABN 55 001 229 554  
A SUBSIDIARY OF FUJITSU GENERAL LIMITED